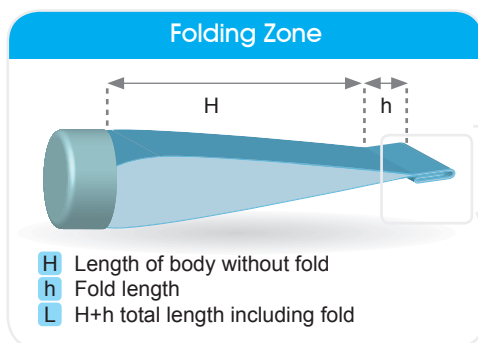


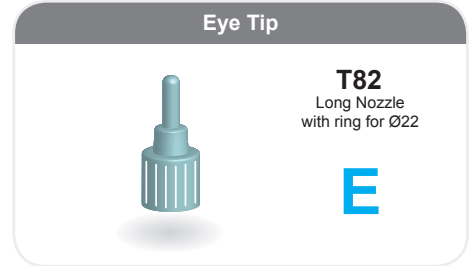
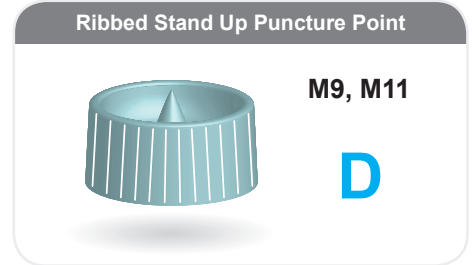
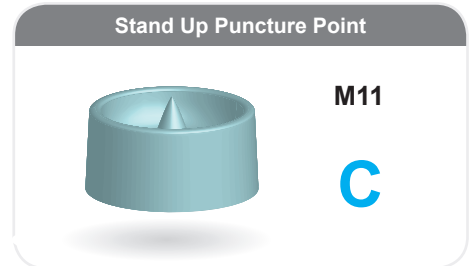
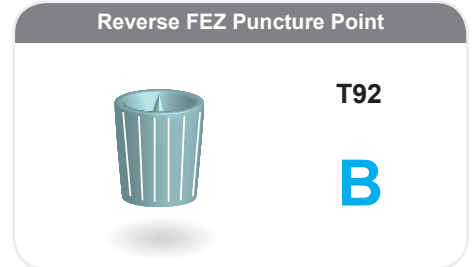
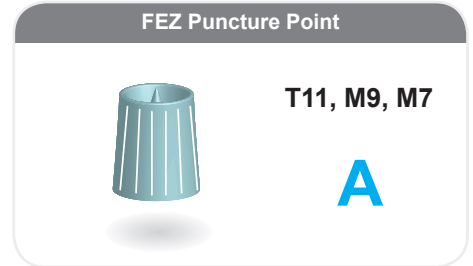
Head and Cap Range				
Tube diameter		Length (min-max)	Head	Caps
mm	inch Approx'	mm		
13.5	1/2"	85-90	M7	A
19	3/4"	85-125	M9, T92	A, B, D
22	7/8"	100-135	M9, T82	A
		100-135	M9, T92	A, B
25	1"	100-150	M9, M11, T11	A, C, D
28	1 1/8"	100-170	M9, M11, T92, T11	A, B, C, D
30	1 1/4"	100-150	M11, T11	A, C, D
31.75		100-170	T92, M9	B, A
32		100-170	M9, M11, T11	A, C, D
35	1 3/8"	120-190	M11	C, D
38	1 1/2"	120-165	M9	A
40	1 23/40"	120-170	T11	A

Recommended Tube Length in mm (includes regular fold of 14mm)													
Tube Diameter in mm													
mm	13.5	19	22	22.2	25	28	30	31.75	32	35	38.1	40	
ml min	80	80	100	100	100	100	100	100	100	120	120	120	
8	80												
15		85											
20		105											
25		120	100	100									
30			115	115	100								
35			130	125	110								
40					120								
45					130	115	110						
50					140	120	115						
55					150	130	120						
60						135	130						
70						150	145	135	135				
75						160	150	140	140	125			
95								165	165	150	135		
100								170	170	155	140		
105										160	145	140	
125										180	160	155	
130										185		160	
135												165	
145												170	
150													
ml max	90	125	135	135	160	170	150	170	170	190	165	170	
inch	1/2"	3/4"		7/8"	1"	1 1/8"		1 1/4"		1 3/8"	1 1/2"	1 23/40"	

Approximate Tube Diameter in Inches



Available Caps



Technical Notes

Up to 4 offset color.
Specific internal coating developed according to use (hair coloration, pharmaceuticals).
Fold seal to ensure secure folding.

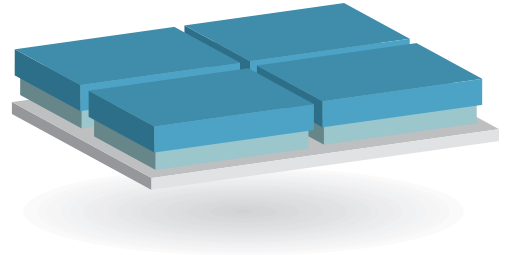
Aluminum Tubes - Packaging in carton + Lid

Local market & Europe: Carton + Lid, Euro pallet

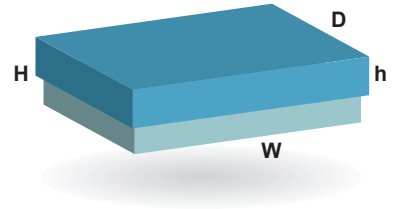
Rigid plastic boxes - Same dimensions

Aluminium Tubes Packaging		
Height	Layers on a pallet	
1540mm	7	High Carton
1740mm	8	
1940mm	9	
2140mm	10	
1490mm	9	
1640mm	10	
1790mm	11	
2090mm	13	

Euro pallet
1200mm x 800mm, h: 140 mm



W: 590mm
D: 390mm
High Carton H: 200mm (Max length of tube +cap: 180mm)
Low Carton H: 150mm (Max length of tube +cap: 140mm)
High Lid h: 100mm
Low Lid h: 70mm



Qty of tubes per pallet

	Tubes in carton	Layers on a pallet					
		7	8	9	10	11	13
		Qty of tubes on a pallet					
Ø 19mm	609	17,052	19,488	21,924	24,360	26,796	31,668
Ø 22mm	450	12,600	14,400	16,200	18,000	19,800	23,400
Ø 25mm	352	9,856	11,264	12,672	14,080	15,488	18,304
Ø 1 1/8"	266	7,448	8,512	9,576	10,640	11,704	13,832
Ø 30mm	234	6,552	7,488	8,424	9,360	10,296	12,168
Ø 32mm	204	5,712	6,528	7,344	8,160	8,976	10,608
Ø 35mm	186	5,208	5,952	6,696	7,440	8,184	9,672
Ø 40mm	135	3,780	4,320	4,860	5,400	5,940	7,020

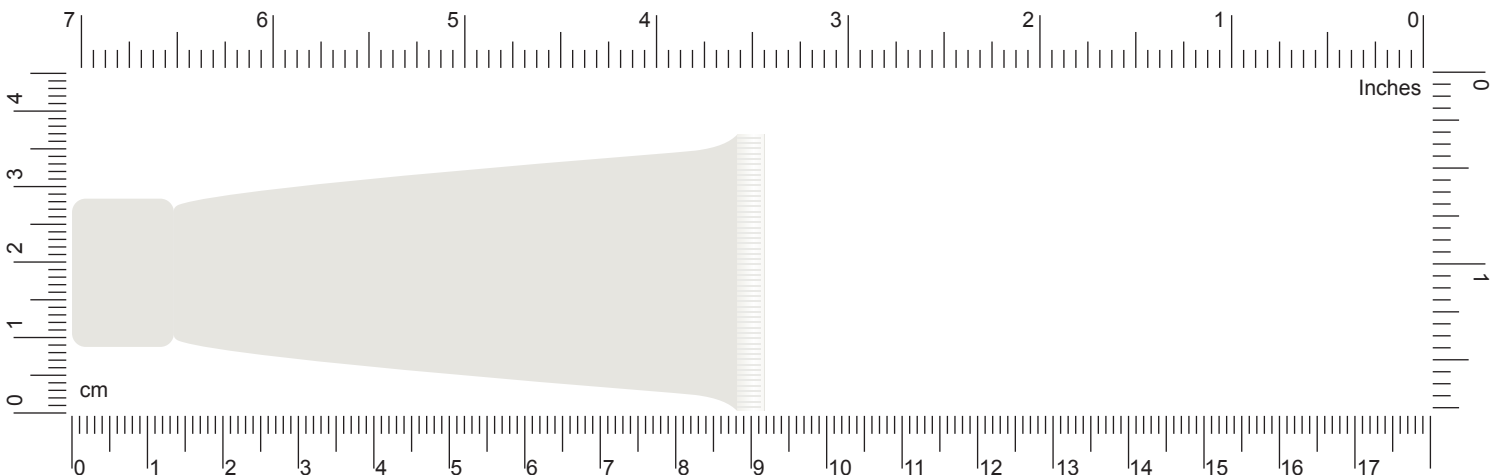
Container of Euro pallets

pallets per layer 11 20'
pallets per layer 24 40'

Container of UK pallets

pallets per layer 10 20'
pallets per layer 22 40'

Measure your tube



Head and Cap Range

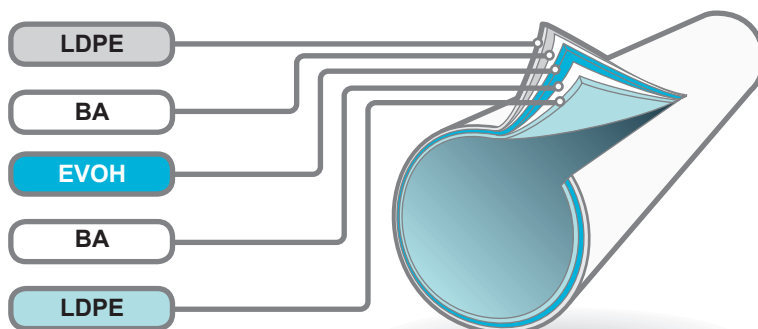
Tube diameter		Length (min-max)	Head	Caps
mm	inch Approx'			
19	3/4"	60-110	M11, Long Nozzle/full, Dome	A, B, C, E
22	7/8"	65-120	M11	E
25	1"	75-145	M11, Long Nozzle/full	B, C, E
30	1 1/5"	75-175	M15	D, E, G
35	1 3/8"	80-185	M15, OR, High	D, E, G, H
40	1 1/2"	85-185	M15, OR, High	D, E, G, H
50	2"	100-195	M22, OR, High	D, E, H, G

Recommended Tube Length in mm

		Tube Diameter in mm						
mm		19	22	25	30	35	40	50
ml	min	60	65	75	75	80	85	100
8		60						
10		65	65					
15		80	70					
20		100	85	80				
25			100	90	75			
30			110	100	85			
35				110	90			
40				120	95			
50				140	110	90	85	
60					125	105	95	
70					140	115	105	
80						125	110	
90						135	120	
100						145	125	105
120						165	145	110
125						170	150	115
150							165	130
175								145
200								155
250								180
ml	max	110	120	145	175	185	185	195
inch		3/4"	7/8"	1"	1 1/5"	1 3/8"	1 1/2"	2"

Approximate Tube Diameter in Inches

The Individual Layers of the Co-Extruded Tube



Available Caps

Dome



M15

A

Cosmetic Long Nozzle



Long Nozzle tube
Ø25. Ø19

B

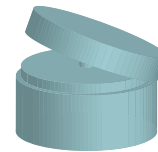
Eye Tip



Long Nozzle tube
Ø25. Ø19

C

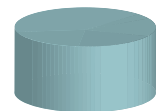
Flip Top



M15, M22

D

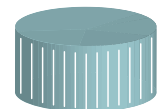
Stand Up



M11, M15, M22

E

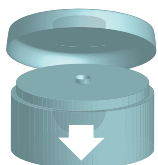
Stand Up Ribbed



M11, M15

G

Flip Top Oriented

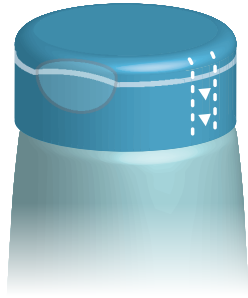


OR

H

First Use Guarantee

**Purity seal on Flip Top Oriented cap:
plastic wrap on cap**



Ø35, Ø40, Ø50

Tamper evident: aluminum seal



Ø35, Ø40, Ø50

Green Policy Innovation

Lageen Tuboplast promotes Green Industry

Lageen Tuboplast is certified for ISO 14001 for Environment Management

- Reducing raw material usage in caps and sleeves
- Replacing solvent based lacquer with UV and water-based coating preventing emission of Volatile Organic Compounds(VOC)
- renewable plant based resources as Sugarcane Resin for plastic tubes
- Using plastic sleeve for oriented caps as purity seal
- Recycling plastic and aluminum scrap as well as carton packaging

Decoration

Dry Offset Printing:

Up to 8 color + External Coating;

High definition, CTP (Computer To Plates) technology replaces Labels, saves Material and Energy and provides high Quality of printing, very similar to color photography.

Hot stamping decoration on tube and on cap: gold, silver, coloured, and with tactile effect.

External coating: Glossy, Matt or Satin finish.

Silk Screen Printing:

Up to 6 color + External Coating;

Selected coating and special coating with haptic effects.



LAGEEN TUBOPLAST LTD

Kibbutz Yagur, 30065, Israel
Tel: +972 4 984 8077
Fax +972 4 984 7050
Email: lageenTubes@lageen.com



North America & Canada

Steven A. Gallo, Director - Business Development
Tel: +609-257-3417
Cell: +609-200-271
Email: steven@lageen.com



UK and Ireland

Rob Thompson, Sales Agent
46 Townsend Mews, Stevenage, Hertfordshire SG1 3AT
Mobile: 077 92299988
Office: 014 38515361
E-mail: rob@lageen.com



Western Europe PACKRIGHT

Avishai De Groot
Plein 50 1354 LJ Almere, The Netherlands
Tel: +31 (0) 36 521 5361
Fax: +31 (0) 36 536 9215
Email: adegroot@packright.nls



CIS countries LEAN LAGEEN MIRUPACK

Elena Ivashchuk
25 Promishlenaa str., Minsk 220075
Republic of Belarus
Tel/fax: +375 17 346 2143
Cell: +375 29 625 1736
Email: elena@mirupack.by



India S. Zhaveri Pharmakem Pvt. ltd.

Mihir Soni, Executive - Marketing
308-310, Shiv Smruti Chambers, 49 Dr. A. B. Road,
Worli, Mumbai - 400 018. India.
Tel: +91 22 4367 6666
Fax: +91 22 6660 7758
Cell: +91 98670 74448
Email: mihir@szhaveri.net



SOUTH AFRICA

HENDRI SWART
Cell: +27 (84) 914 4491
E-mail: Hendri@bluedotpackaging.com